

## Fitting Instructions Bolted connectors for power cables

### Product description

These bolted connectors are equipped with bolts, which shear off smoothly when the optimum contact force has been reached on tightening. They are used for joining the ends of cables with the same or different cross-section (see table sheet).

The scope of supply includes:

- 1 Bolted connector with shear bolts; coloured centring sleeves (see table); Fitting instructions

**!** Bolted connectors may only be fitted by qualified and trained specialists. Fitting is to be carried out under clean and dry conditions. Read the fitting instructions carefully before starting work.

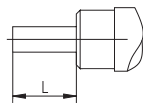
PFISTERER Kontaktsysteme  
GmbH & Co. KG  
Rosenstraße 44  
73650 Winterbach  
Germany  
Telefon +49(0)71 81-70 05-0  
www.pfisterer.de

### Fitting

#### Preparation of cable ends

- Saw cable of evenly; do not cut.
- Remove outer straight. The stripping length has to be chosen in accordance with the information provided by the joint box manufacturer.
- Remove the remaining layers, screens and insulation, with the exception of the primary insulation, in accordance with the joint box manufacturer's instructions.
- When removing the primary insulation of the conductor, the following stripping length apply:

Connector mm <sup>2</sup>	Stripping length L mm	
	with centring sleeve	without centring sleeve
10 - 95	39	34
25 - 150	60	55
50 - 240	69	67



- We recommend brushing aluminium cable ends shortly before placing in to the connector. The bare conductor must be clean and free from grease when fitting.

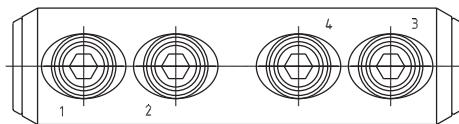
#### Preparing the bolted connector

- Centring sleeves must be used with smaller conductor sizes in order to ensure that the conductor is guided central (see assignment table sheet). Screw the centring sleeve in as far as the stop.

**!** The connector is pre-greased. Do not remove the grease.

- Feed the stripped cable ends into the connector.
- Screw in the shear bolts using an Allen key (width across flats, see table sheet) starting with bolt No. 1 until they break off smoothly. Continue with bolt No. 2 and similarly with the opposite side of the connector. (Tightening sequence see sketch).

#### Tightening sequence



**!** The bolt must not protrude above the body of the connector after shearing. (Address the excess length if necessary).

Pfisterer Kontaktsysteme GmbH & Co. KG is a reputable company, and is synonymous with high product quality. In order to continue to guarantee this quality, we depend on your feedback in the case of quality defects and fitting difficulties. Please inform us of any problems.

Pfisterer Kontaktsysteme GmbH & Co. KG shall not be liable in the case of improper use and non-observance of safety regulations, nor for consequential damages thereof.

Assignment table for centring sleeves

Designation Cross section	Allen key Ø outer / Length	Centring sleeve	332 594 001 10-95 mm <sup>2</sup>				332 593 001 25-150 mm <sup>2</sup>				332 592 001 50-240 mm <sup>2</sup>				
			SW 4 24 mm / 75 mm		SW 5 28 mm / 112 mm		SW 6 33 mm / 130 mm		SW 4 24 mm / 75 mm		SW 5 28 mm / 112 mm		SW 6 33 mm / 130 mm		
Round solid			black	without	grey	black	without	black	white	black	white	black	white	without	
Sector solid	90° 120°		10-50	70-95	25-70	95-120	150	95-120	25-70	95-120	120	95-120	120	185	240
Round stranded				50-70	25-50	70-95	120	70-95	25-50	70-95	120	95	120-150	185	240
Round stranded and compacted			10-35	50-70	25-50	70-95	120	70-95	25-50	70-95	120	95	120-150	185	240
Sector stranded	90° 120°			50-70	25-50	70-95	120	70-95	25-50	70-95	120	95	120-150	185	240
			35-70	70-95	25-50	70-95	120	70-95	25-50	70-95	120	95	120-150	185	240
			35-50	70-95	25-35	70-95	120	70-95	25-35	70-95	120	95	120-150	185	240