

## TENSOREX

### **For constant restraint of catenary wires and carrier cables in rail transport.**

Catenary wires are continuously subjected to temperature-dependent expansion. These are compensated for by tensioning systems and the sag of the wires kept as constant as possible. However, standard wheel tensioners and retensioning gauges take up a lot of space. It's often necessary to build vertical extensions along the mast and to build installation ducts down the sides of tunnels. Advanced: TENSOREX® is a patented automatic tensioning system that takes up much less space than other systems. It does away with the need for extensions and installation ducts.

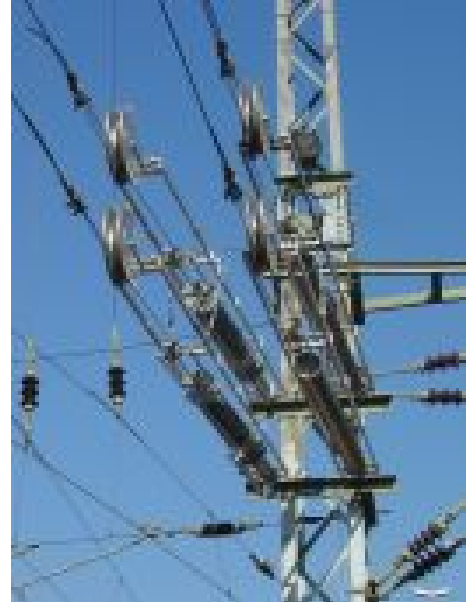
#### Benefits:

- Constant tension on catenary wires and/or carrier cable due to spring force.
  - Suitable for all temperature ranges and tensioning lengths (see selection table)
  - Minimum storage and maintenance costs
  - Constant force over entire retensioning length
  - High level of response accuracy
  - For all mast shapes
  - Simple installation - low staffing costs
  - Moving parts not accessible - protective cages not needed
- Available as options:
- Monitoring system which can be controlled remotely



# THE POWER CONNECTION

CABLE SYSTEMS | COMPONENTS | OVERHEAD LINES | RAILWAY CATENARY SYSTEMS



# THE POWER CONNECTION

CABLE SYSTEMS | COMPONENTS | OVERHEAD LINES | RAILWAY CATENARY SYSTEMS